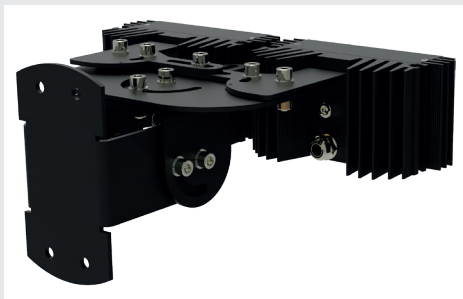
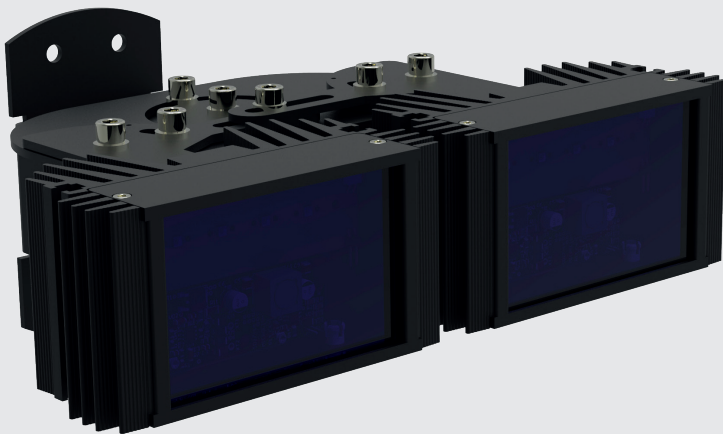


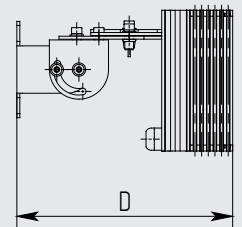
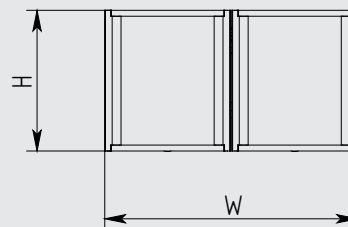
Vario IR 5.0-50

Infrared Illuminator for cameras with zoom lens 5.0-50 mm

MICROLIGHT











Model	W, mm	H, mm	D, mm
Vario IR 5.0-50/30	171	60	146
Vario IR 5.0-12/45	171	74	146
Vario IR 5.0-50/56	171	95	146
Vario IR 5.0-50/66	272	95	215
Vario IR 5.0-50/75	171	135	146
Vario IR 5.0-50/93	272	145	215
Vario IR 5.0-50/114	272	180	215
Vario IR 5.0-50/132	272	230	215
Vario IR 5.0-50/148	273	263	215



	Distance, m	Power consumption, W	Supply voltage, V	Weight, kg
Vario IR 5.0-50/30	up to 32	7.0 max	12...24 V AC/DC	0.9
Vario IR 5.0-50/45	up to 45	10.0 max	12...24 V AC/DC	1.1
Vario IR 5.0-50/56	up to 56	15.0 max	12...24 V AC/DC	1.3
Vario IR 5.0-50/66	up to 66	18.0 max	12...24 V AC/DC	3.1
Vario IR 5.0-50/75	up to 75	23.0 max	12...24 V AC/DC	1.8
Vario IR 5.0-50/93	up to 93	35.0 max	12...24 V AC/DC	3.8
Vario IR 5.0-50/114	up to 114	53.0 max	12...24 V AC/DC	4.4
Vario IR 5.0-50/132	up to 132	70.0 max	12...24 V AC/DC	5.2
Vario IR 5.0-50/148	up to 148	88.0 max	12...24 V AC/DC	5.8

Ingress protection	IP67, IK08
Operation temperature	-40...+50 °C

Distance is indicated for the camera with 1.3 ° 2 Mpix sensor and Sence-Up mode off. Use a correction factor 2.5 - 3.0 to determine the approximate distance for camera with CCD sensor.

-  high-performance surface-mount LEDs
-  increased efficiency of removal of heat from the radiating elements
-  IR light filter with minimal loss of radiation power
-  built-in current regulator
-  tripping delay photocell to prevent accidental turn off
-  built-in photocell
-  supply voltage 185...265 V AC
-  supply voltage 12...24 V AC/DC

Options available:
 w/o built-in photocell
 PoE IEEE 802.3af (PoE)
 PoE IEEE 802.3at (PoE+, UPoE)
 Supply voltage 185...265 V AC
 RAL color available

