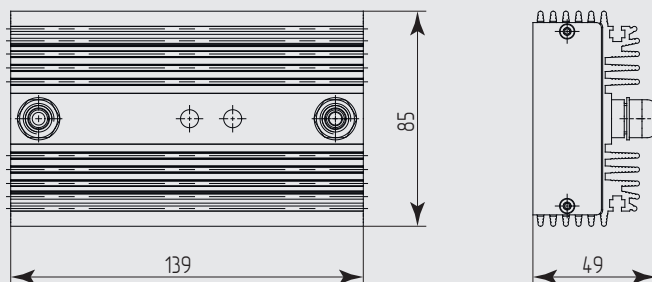
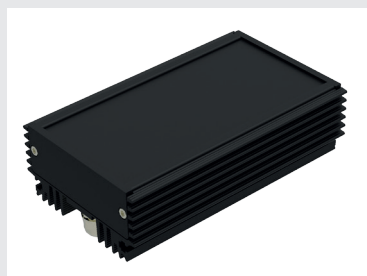


PSU-4 LD

LED driver

MICROLIGHT



Supply voltage	185...265 V AC
Power consumption	up to 93.0 W
Built-in photocell	yes
Ingress protection	IP67, IK10
Operation temperature	-40...+50 °C
Weight	0.9 kg

Output power
(It is set at the factory)

The output voltage at
established current of 1 A

up to 15 W

7...15 V DC

up to 30 W

15...30 V DC

up to 50 W

30...50 V DC

up to 70 W

50...70 V DC

up to 90 W

70...90 V DC



built-in current regulator



factory setting of the output current 100...1000 mA



power factor corrector



two outputs channels



tripping delay photocell to prevent accidental turn off



built-in photocell



supply voltage 185...265 V AC

Optional:

w/o built-in photocell
power factor corrector
output current up to 1A
RAL color available

