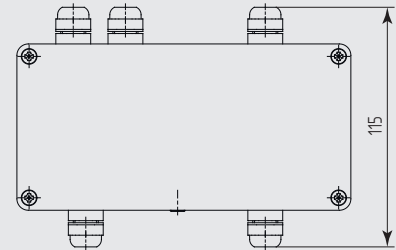
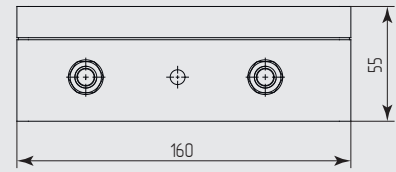


# PSU-4 PoE

PoE splitter

MICROLIGHT



Supply voltage	from PoE injector
Power consumption	up to 60.0 W
Built-in photocell	yes
Ingress protection	IP67, IK10
Operation temperature	-40...+50 °C
Weight	0.6 kg

Input voltage and Ethernet	from injector PoE IEEE 802.3af PoE+ (UPoE) IEEE 802.3at
Power output for connecting a video camera (on constantly)	12 V 1 A DC
Power output for connecting the illuminator (or other equipment), photocell	2 x 48 V DC
Short circuit protection	yes
Output Ethernet	yes
Full power	up to 60 W



output 12 V DC



tripping delay photocell to prevent accidental turn off



built-in photocell



PoE (PoE+, UPoE)  
IEEE 802.3af (at)

Optional:  
w/o built-in photocell  
RAL color available

