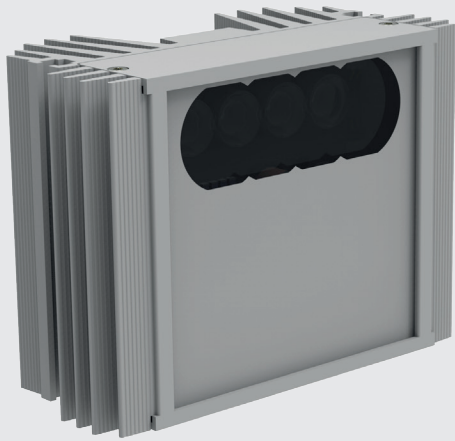


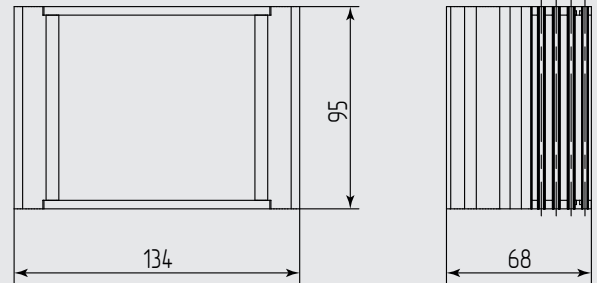
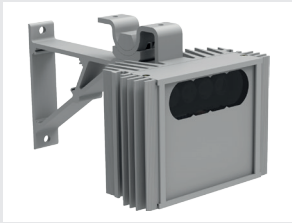
Helios WL-294-S Eco

white light illuminator with accent lighting










MICROLIGHT



Supply voltage	12...24 V AC/DC
Power consumption	14.0 W
Built-in photocell	yes
Ingress protection	IP67, IK10
Operation temperature	-40...+50 °C
Weight	1.0 kg



Color temperature, K	5000				
Angle, °	15	30	45	60	90
Luminous flux, lm	1120				
Luminous intensity, cd	20700	5300	2300	1300	610
Color rendering index, R _A	80				
The level of light at a distance of 3 m, lx	2300	590	255	140	65
The level of light at a distance of 5 m, lx	825	210	90	50	25
The level of light at a distance of 10 m, lx	205	50	23	13	6

-  built-in current regulator
-  increased efficiency of removal of heat from the radiating elements
-  high-performance surface-mount LEDs
-  different versions based on the color temperature of light
-  tripping delay photocell to prevent accidental turn off
-  built-in photocell
-  supply voltage 185...265 V AC
-  power over ethernet (PoE) IEEE 802.3af
-  supply voltage 12...24 V AC/DC

Optional:

- w/o built-in photocell
- screw-thread 1/4" (1/4-20 UNC)
- PoE IEEE 802.3af (PoE)
- supply voltage 185...265 V AC
- RAL color available

